

INTRODUCING



JASON TATGE – CEO

Stimulate The Soil.

June, Before PrairieFood
Depleted alfalfa field



May 5th

Grow Your Future.

August, After PrairieFood
Rejuvenated alfalfa field



June 5th



July 5th



August 5th

PrairieFood at-a-Glance

ABOUT

PrairieFood is the complete soil nutrition company. We restore the symbiotic relationship between plant and soil for more resilient crops.

COMPANY

2020

First field application

7

Number of Employees

1.23M

Gallons Applied

FINANCIALS

\$1.20M

2022 Revenue

\$1.44M

2023 Revenue

\$2.54M

2024 Projected Revenue

7.14%

2023-2028 CAGR

Soil is under more pressure than ever before.

Conventional farming practices have rapidly turned much of our healthy soil into barren dirt. What if you could nourish soil with native microbes to become more resilient while reducing your synthetic inputs **by half?**

How much nitrogen does corn get from fertilizer?

Less than farmers think...

“corn takes up the majority of its nitrogen – about 67% on average – from sources occurring naturally in soil, **not from synthetic fertilizer.**”

<https://aces.illinois.edu/news/how-much-nitrogen-does-corn-get-fertilizer-less-farmers-think>

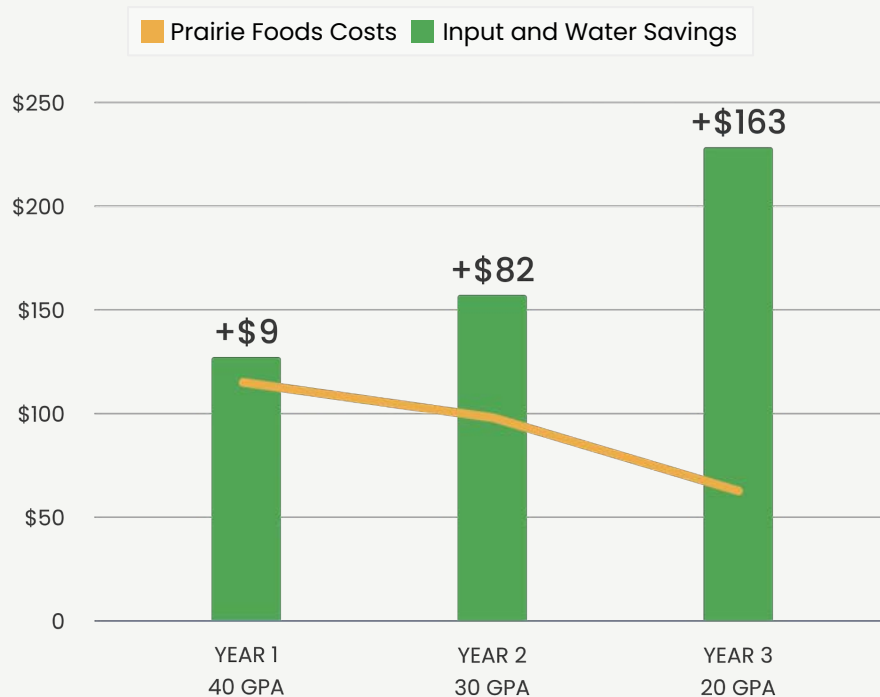
Weaning your fields from synthetics.

Investing in soil health is one of the most strategic activities with the highest ROI's any grower can undertake.

KEY BENEFITS

- 🌱 Reduces Reliance on Synthetic Fertilizers
- 🌱 Builds Soil Health –Soil Organic Matter
- 🌱 Improves Crop Quality
- 🌱 Increases Water Storage Capacity

INCREASING RETURN ON INVESTMENT



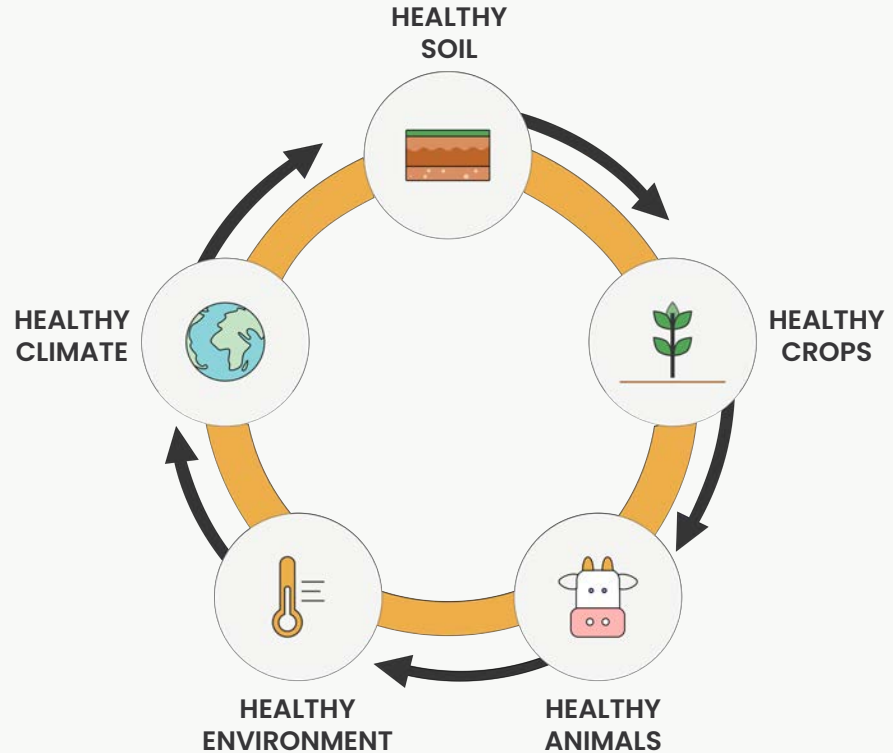
¹ For 200 BU corn yield goal, farmers spend \$213/acre on fertilizer and \$15/acre for application. KS/NE Corn after corn (200-bushel yield goal) on sandy loam to silt loam soils. Grower adopts soil health practices (reducing tillage, adding cover crop) after first year with PF. Nutrient reductions and results may vary from field to field depending on weather, soil nutrients, and management practices.

Next-Generation Farming



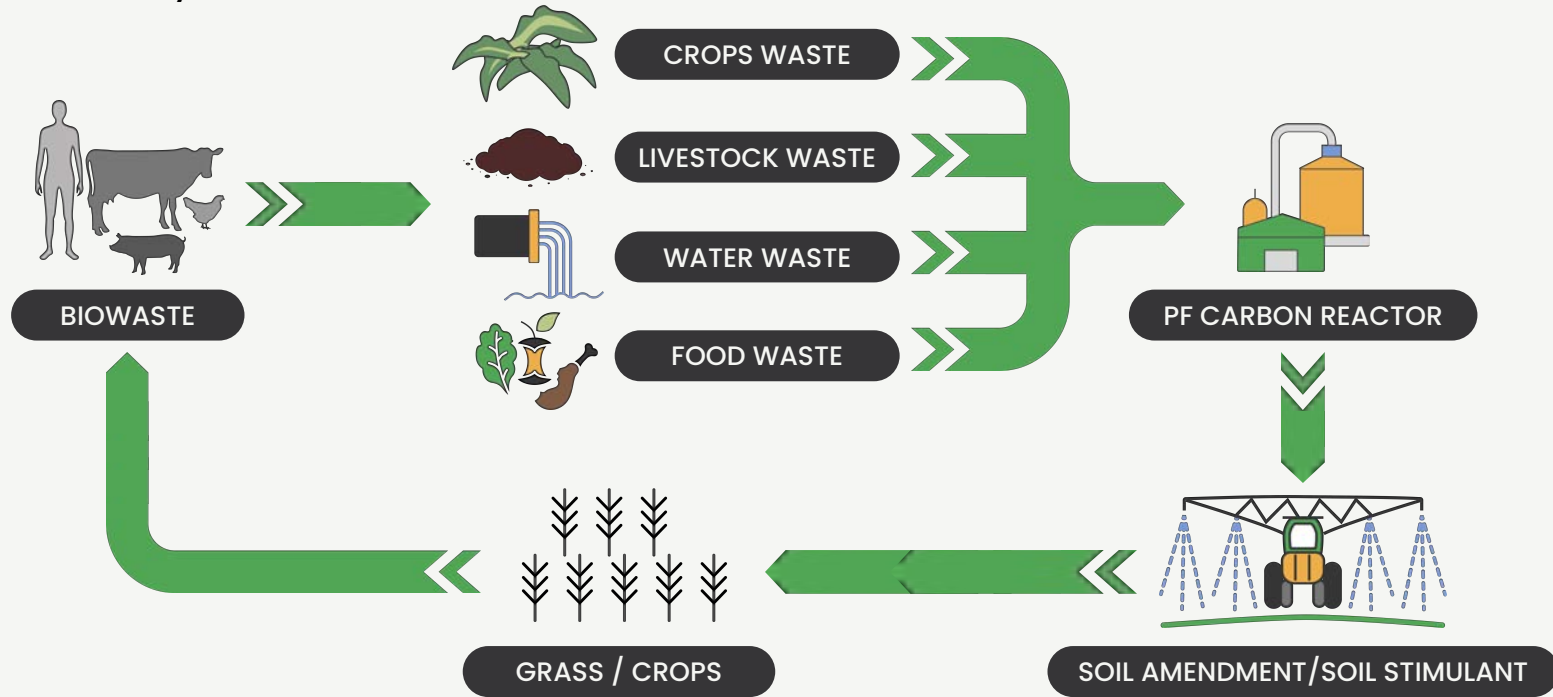
Mississippi Watershed

The Mississippi River and its tributaries drain 41% of the United States and carry the nutrients that cause the Gulf's dead zone



Planting the seeds of opportunity

A Virtuous Cycle



Our Technology

Our patented CarbonShred process transforms abundant biowaste into a micro-carbon rich soil superfood.

KEY BENEFITS

- 🌱 An All-In-One Micro Carbon Superfood
- 🌱 Wean Your Land Off Of Synthetic Inputs
- 🌱 A More Predictable Crop, Year After Year
- 🌱 Renewable From Start To Finish
- 🌱 Accelerate Soil Regeneration

